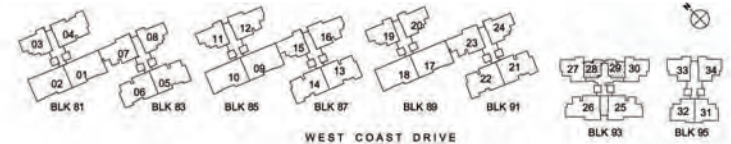


Hundred Trees - Floor Plans
Strictly not for circulation
*** Areas are not finalised and subj to change**

**1 - Bedroom
Type A1**

Unit #02-28 to #11-28
Unit #02-29 to #11-29 (mirror image)

45sqm/ 484sqft



Hundred Trees - Floor Plans

Strictly not for circulation

* Areas are not finalised and subj to change

1 - Bedroom Type A1-P

Unit #01-28

Unit #01-29 (mirror image)

45sqm/ 484sqft



Hundred Trees - Floor Plans

Strictly not for circulation

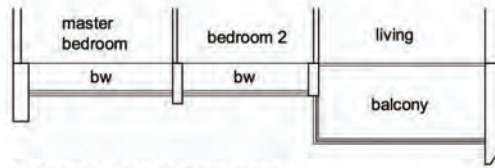
* Areas are not finalised and subj to change

2 - Bedroom Type B1

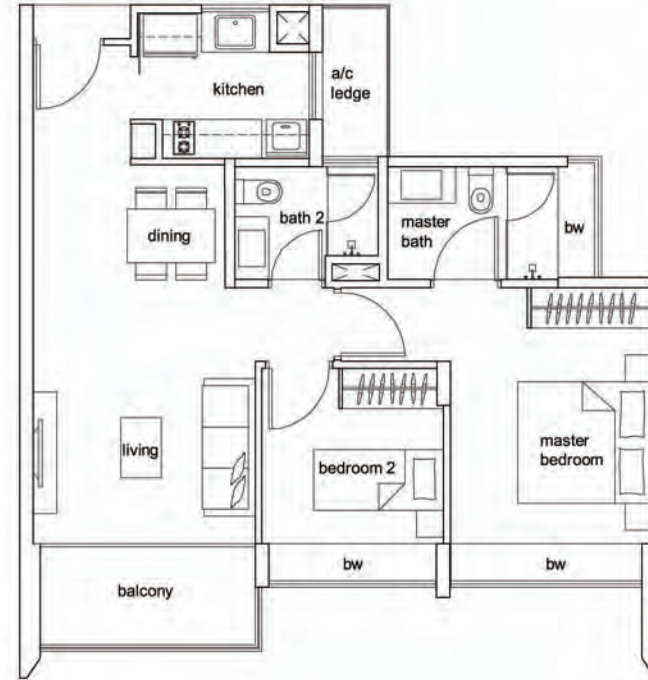
Unit #02-31 to #11-31

Unit #02-32 to #11-32 (mirror image)

73sqm/ 786sqft



Unit #02-32 to #11-32 (mirror image)



Hundred Trees - Floor Plans

Strictly not for circulation

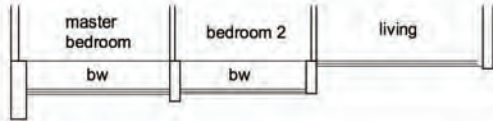
* Areas are not finalised and subj to change

2 - Bedroom Type B1-P

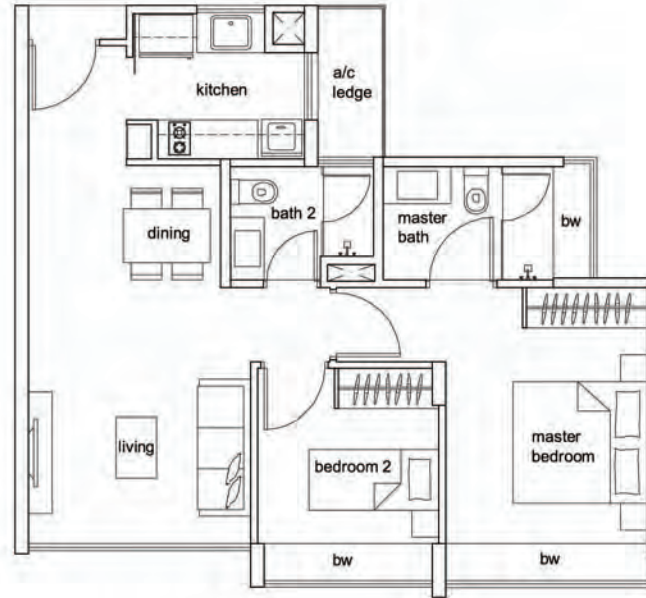
Unit #01-31

Unit #01-32 (mirror image)

67sqm/ 721sqft



Unit #01-32 (mirror image)



WEST COAST DRIVE

Hundred Trees - Floor Plans

Strictly not for circulation

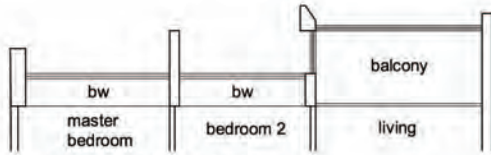
* Areas are not finalised and subj to change

2 - Bedroom Type B2

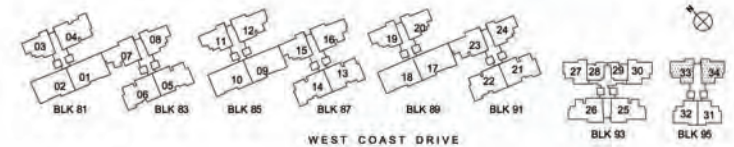
Unit #02-33 to #11-33 (mirror image)

Unit #02-34 to #11-34

73sqm/ 786sqft



Unit #02-33 to #11-33 (mirror image)



Hundred Trees - Floor Plans

Strictly not for circulation

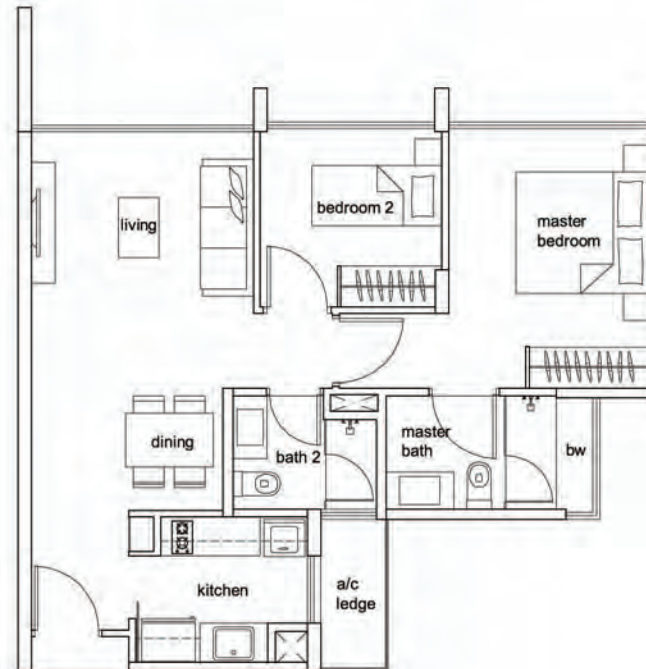
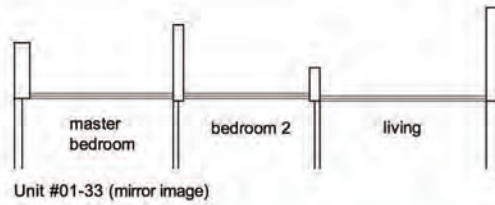
* Areas are not finalised and subj to change

2 - Bedroom Type B2-P

Unit #01-33 (mirror image)

Unit #01-34

64sqm/ 689sqft



Hundred Trees - Floor Plans

Strictly not for circulation

* Areas are not finalised and subj to change

2 - Bedroom Type B3

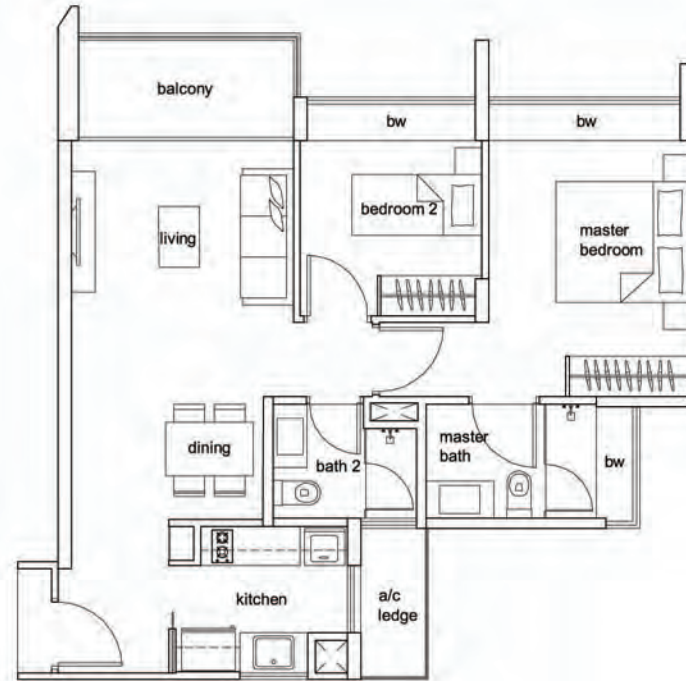
Unit #02-27 to #11-27 (mirror image)

Unit #02-30 to #11-30

73sqm/ 786sqft



Unit #02-27 to #11-27 (mirror image)



Hundred Trees - Floor Plans

Strictly not for circulation

* Areas are not finalised and subj to change

2 - Bedroom Type B3-P

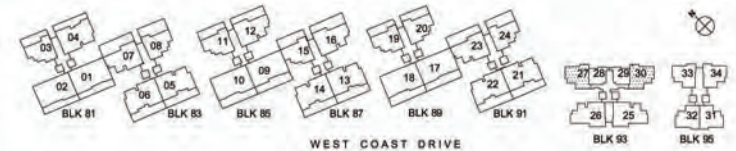
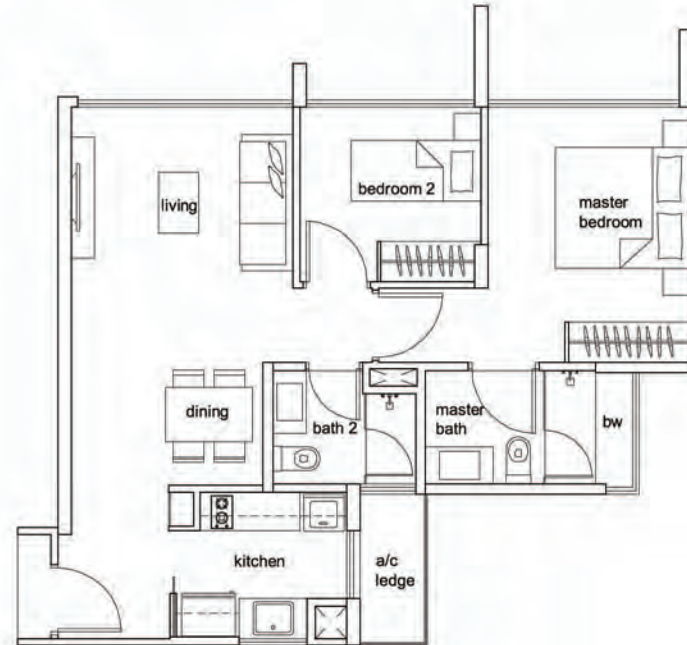
Unit #01-27 (mirror image)

Unit #01-30

65sqm/ 700sqft



Unit #01-27 (mirror image)



Hundred Trees - Floor Plans

Strictly not for circulation

* Areas are not finalised and subj to change

2 - Bedroom + Study Type B4-S

Unit #02-03 to #12-03 (mirror image)

Unit #02-08 to #12-08

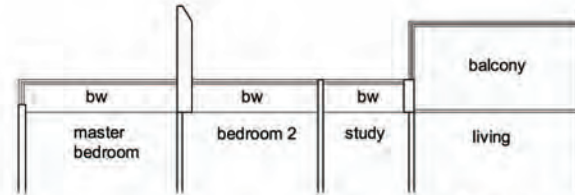
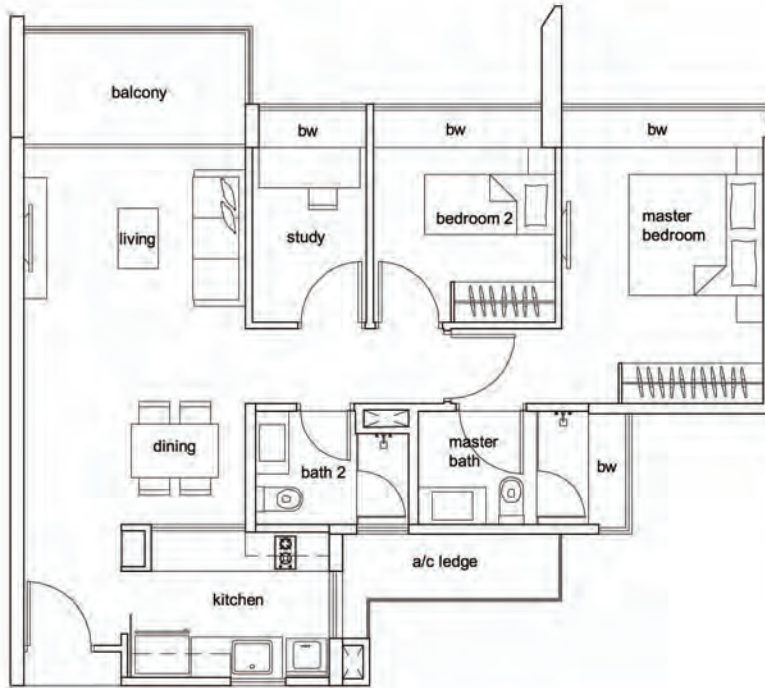
Unit #02-11 to #12-11 (mirror image)

Unit #02-19 to #12-19 (mirror image)

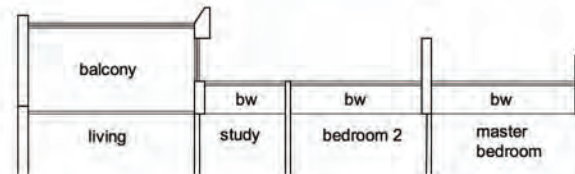
Unit #02-20 to #12-20

Unit #02-24 to #12-24

85sqm/ 915sqft



Unit #02-03 to #12-03 (mirror image)
Unit #02-11 to #12-11 (mirror image)
Unit #02-19 to #12-19 (mirror image)



Unit #02-20 to #12-20



Hundred Trees - Floor Plans

Strictly not for circulation

* Areas are not finalised and subj to change

2 - Bedroom + Study

Type B4-SP

Unit #01-03 (mirror image)

Unit #01-08

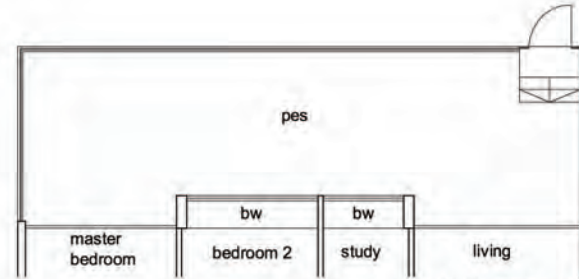
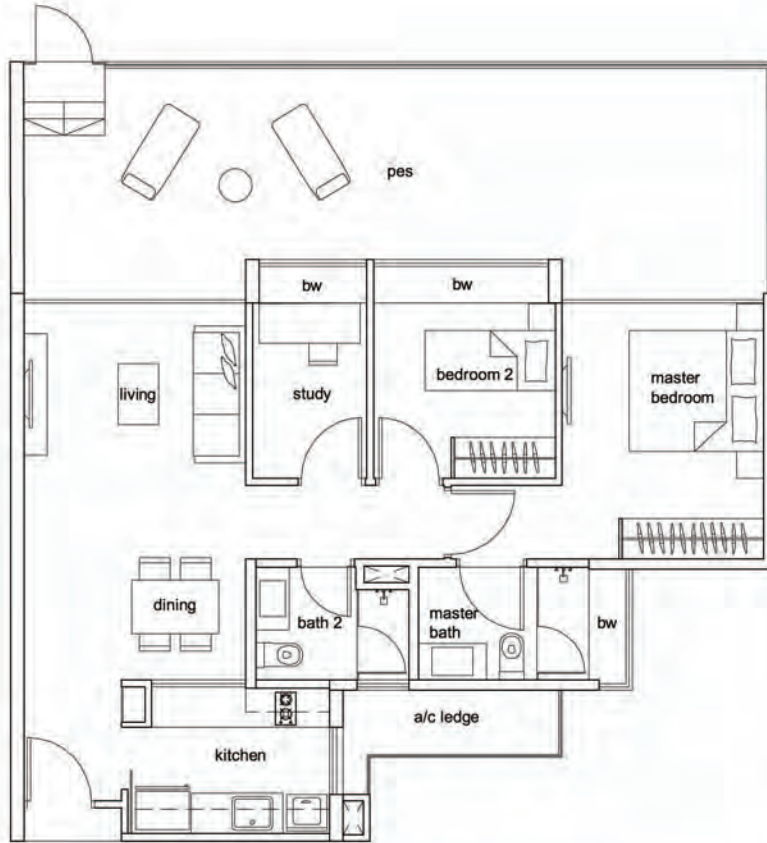
Unit #01-11 (mirror image)

Unit #01-19 (mirror image)

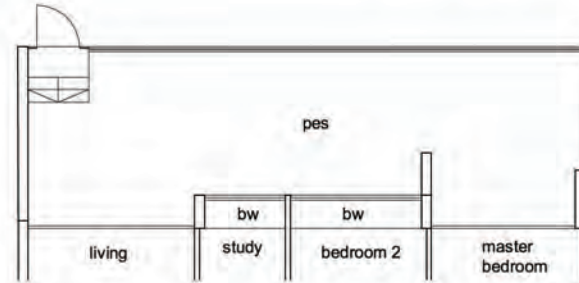
Unit #01-20

Unit #01-24

114sqm/ 1227sqft



Unit #01-03 (mirror image)
Unit #01-11 (mirror image)
Unit #01-19 (mirror image)



Unit #01-20



Hundred Trees - Floor Plans

Strictly not for circulation

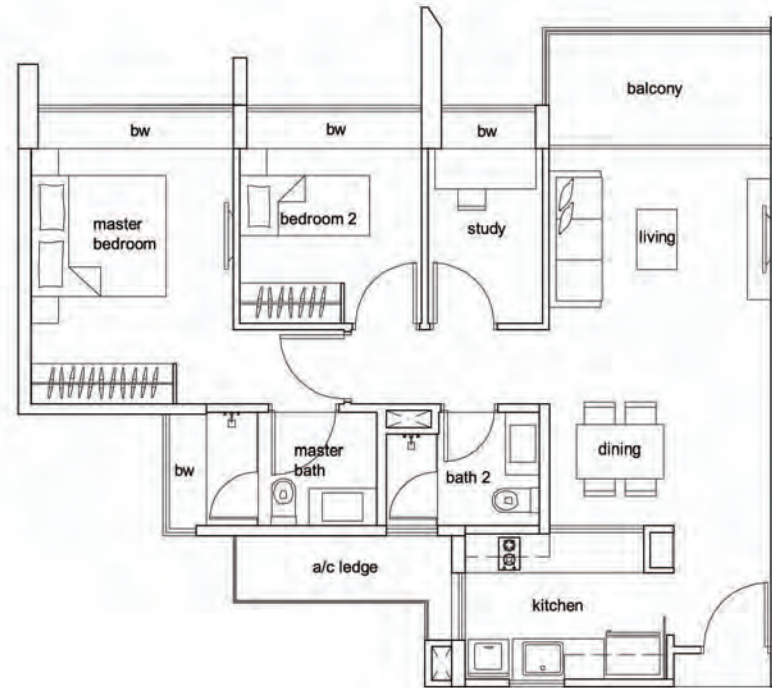
* Areas are not finalised and subj to change

2 - Bedroom + Study

Type B5-S

Unit #02-15 to #12-15

85sqm/ 915sqft



Hundred Trees - Floor Plans

Strictly not for circulation

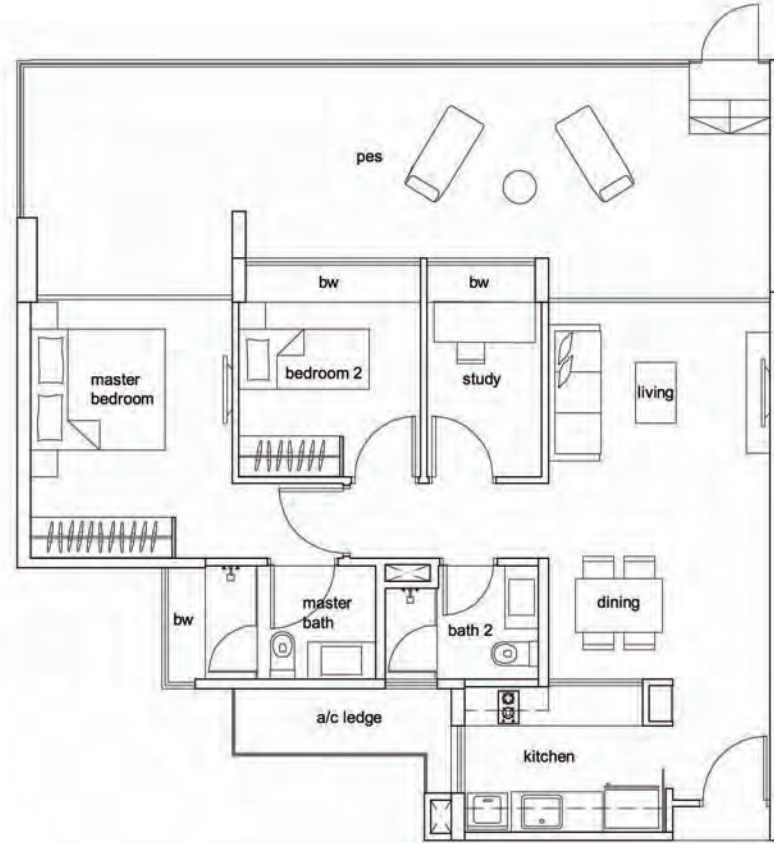
* Areas are not finalised and subj to change

2 - Bedroom + Study

Type B5-SP

Unit #01-15

114sqm/ 1227sqft



Hundred Trees - Floor Plans

Strictly not for circulation

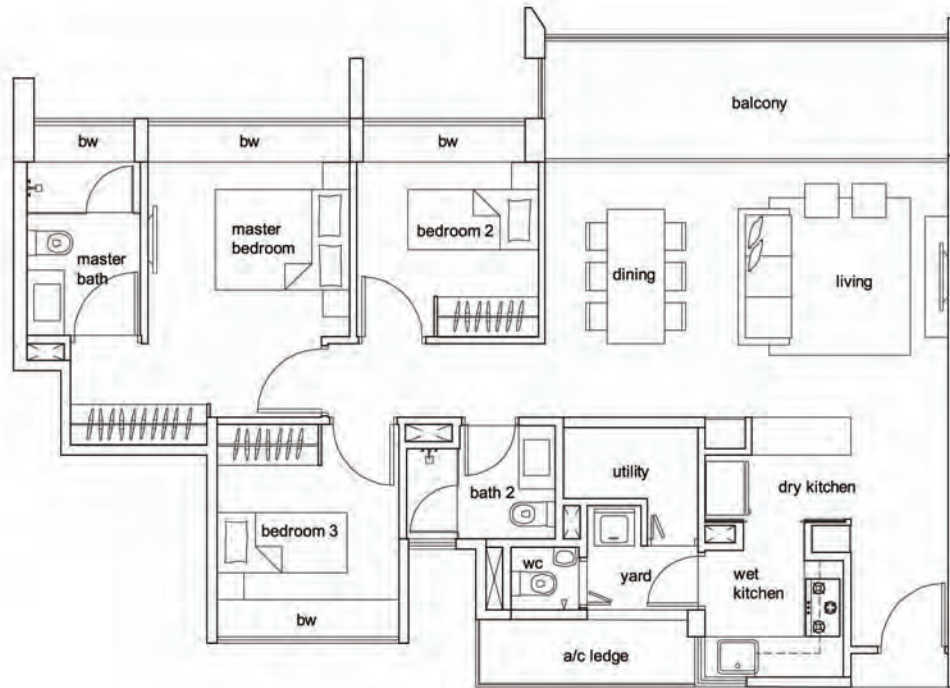
* Areas are not finalised and subj to change

3 - Bedroom Type C1

Unit #02-07 to #12-07

Unit #02-23 to #12-23

108sqm/ 1163sqft



Hundred Trees - Floor Plans

Strictly not for circulation

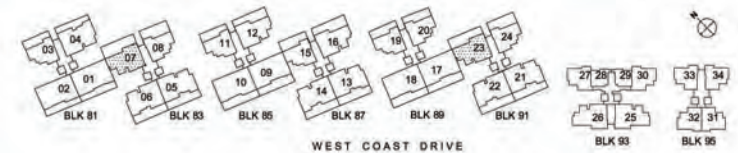
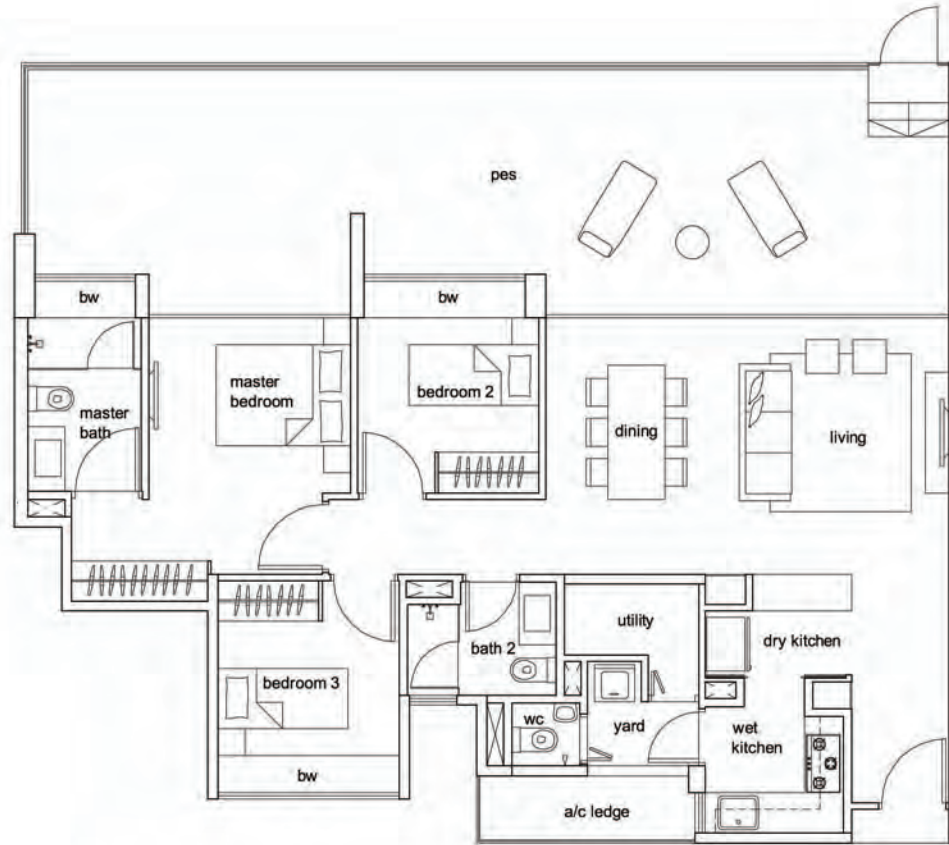
* Areas are not finalised and subj to change

3 - Bedroom Type C1-P

Unit #01-07

Unit #01-23

144sqm/ 1550sqft



Hundred Trees - Floor Plans

Strictly not for circulation

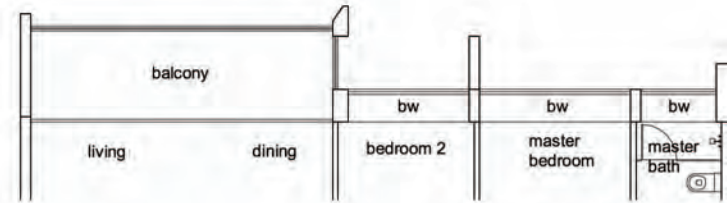
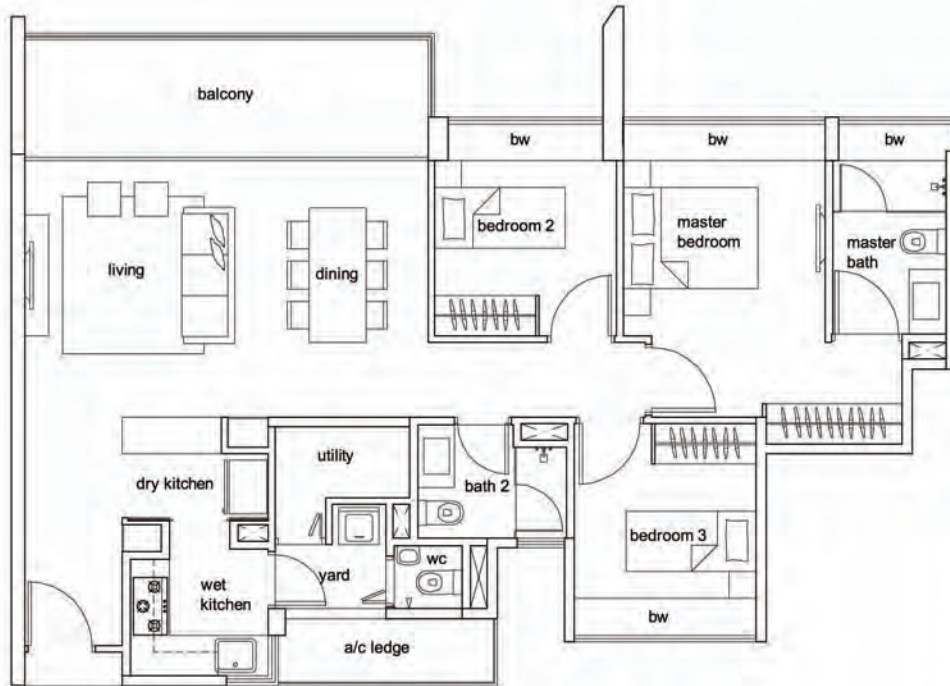
* Areas are not finalised and subj to change

3 - Bedroom Type C2

Unit #02-12 TO #12-12

Unit #02-16 TO #12-16

108sqm/ 1163sqft



Unit #02-12 TO #12-12



Hundred Trees - Floor Plans

Strictly not for circulation

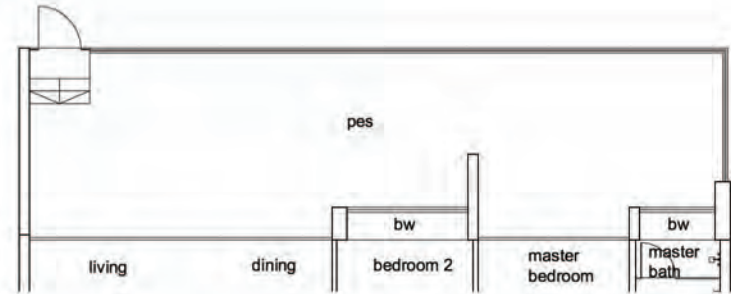
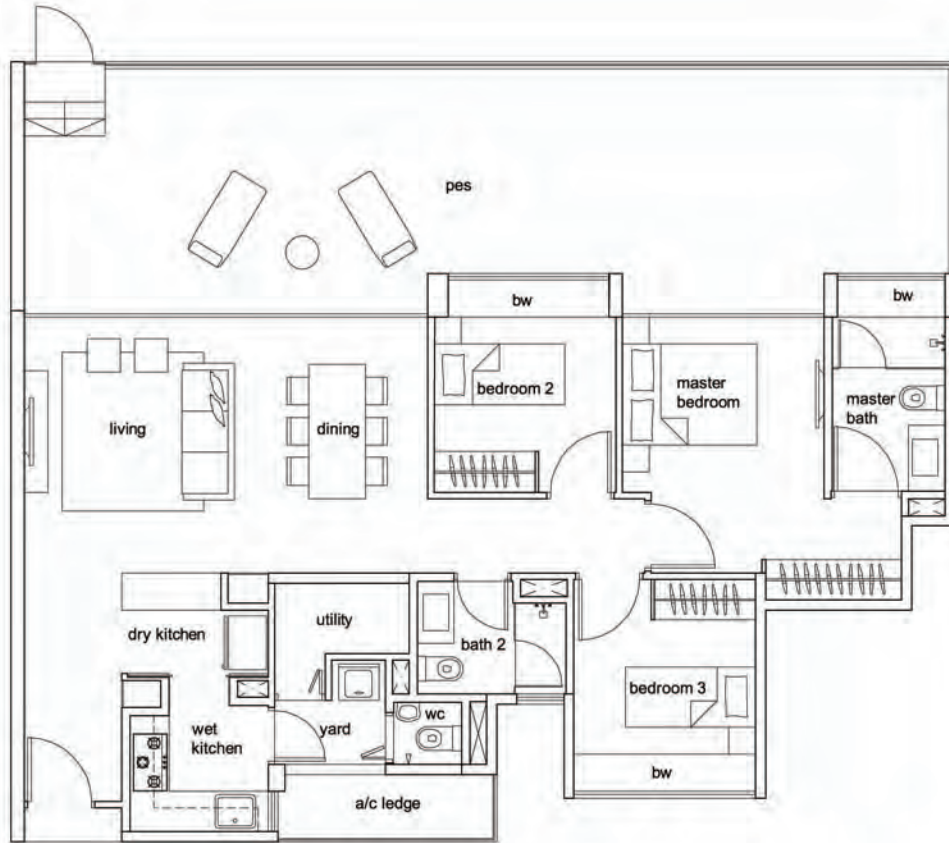
* Areas are not finalised and subj to change

3 - Bedroom Type C2-P

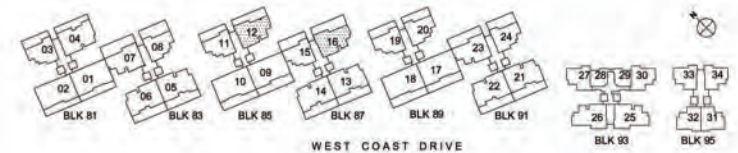
Unit #01-12

Unit #01-16

144sqm/ 1550sqft



Unit #01-12



Hundred Trees - Floor Plans

Strictly not for circulation

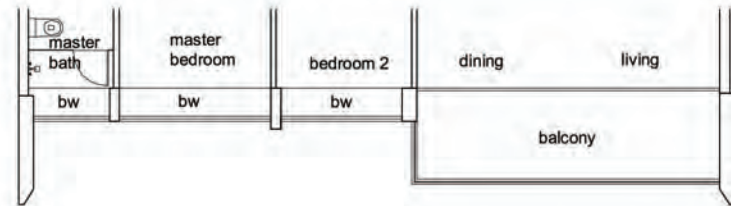
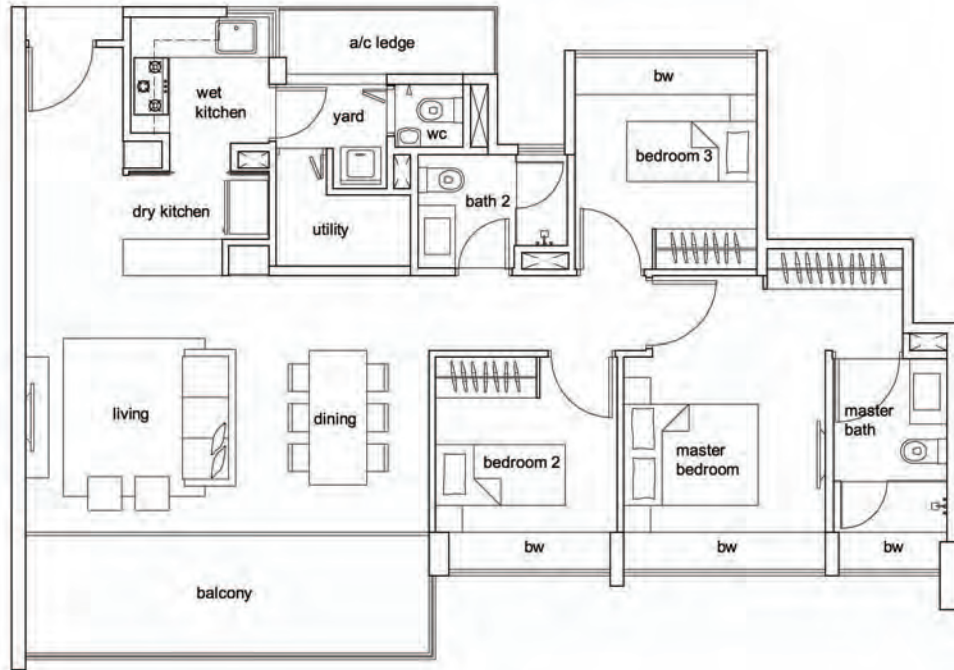
* Areas are not finalised and subj to change

3 - Bedroom Type C3

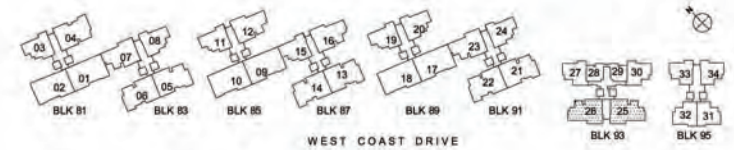
Unit #02-25 to #12-25

Unit #02-26 to #12-26 (mirror image)

108sqm/ 1163sqft



Unit #02-26 to #12-26 (mirror image)



Hundred Trees - Floor Plans

Strictly not for circulation

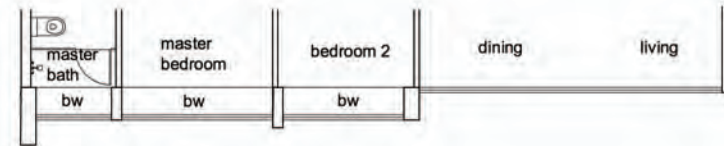
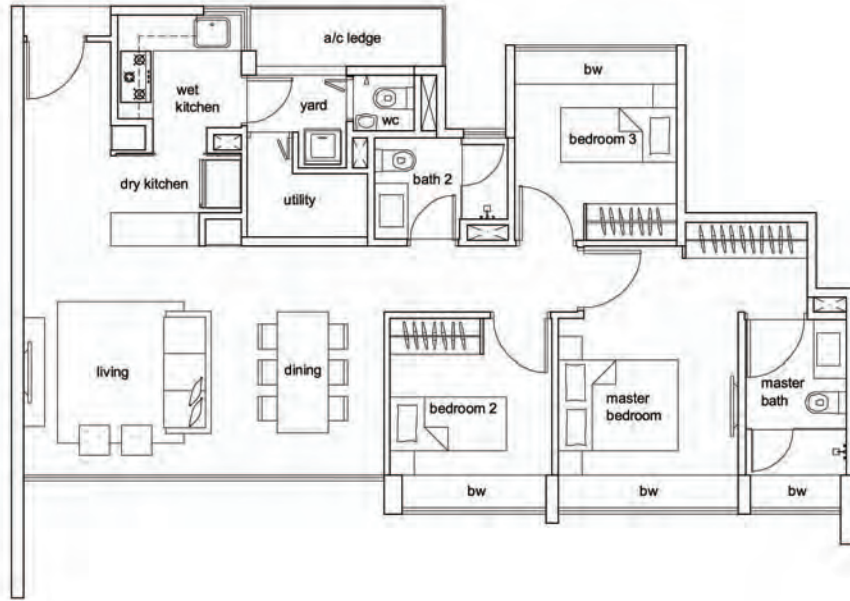
* Areas are not finalised and subj to change

3 - Bedroom Type C3-P

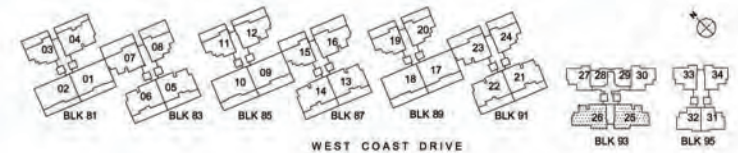
Unit #01-25

Unit #01-26 (mirror image)

97sqm/ 1044sqft



Unit #01-26 (mirror image)



Hundred Trees - Floor Plans

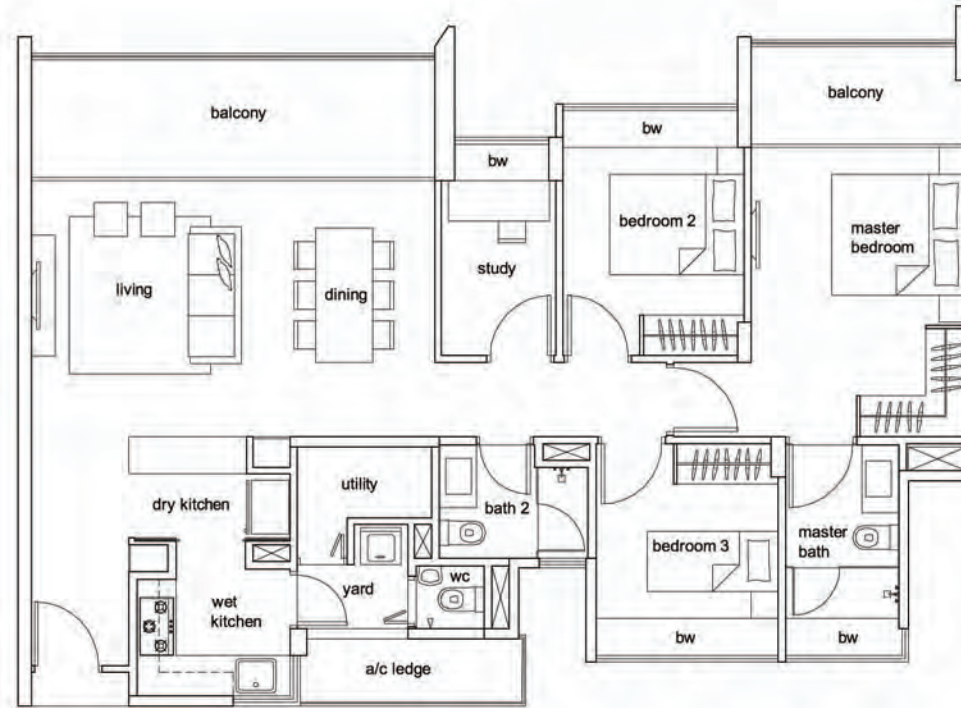
Strictly not for circulation

* Areas are not finalised and subj to change

3 - Bedroom + Study Type C4-S

Unit #02-04 to #12-04

122sqm/ 1313sqft



Hundred Trees - Floor Plans

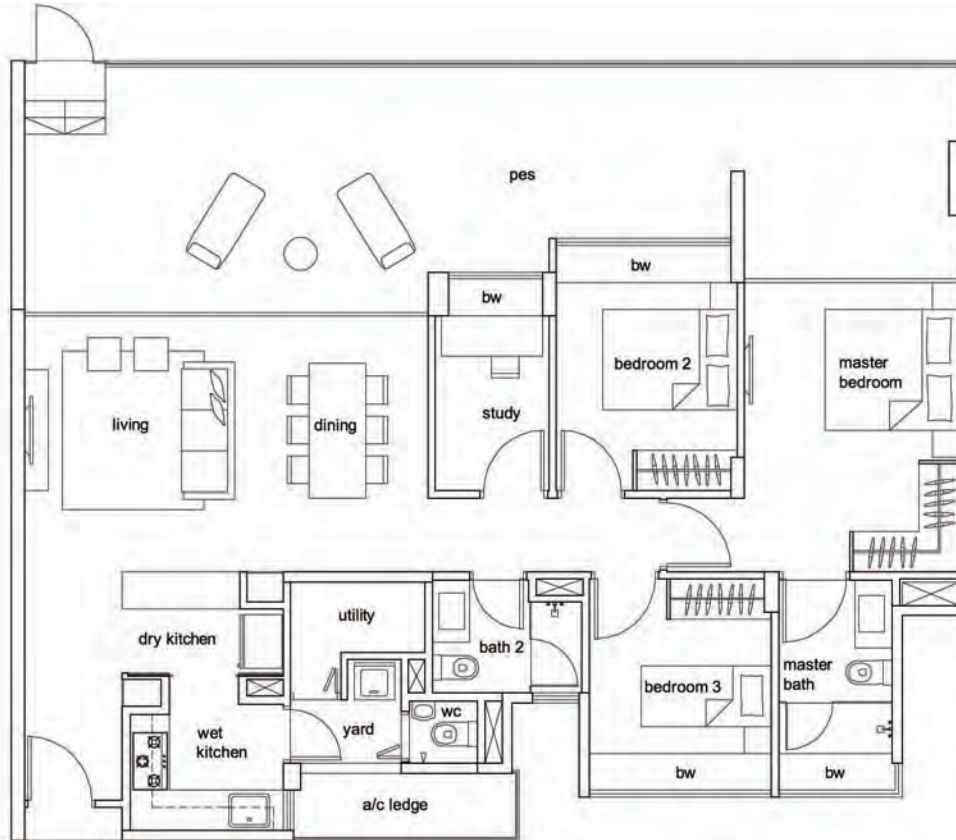
Strictly not for circulation

* Areas are not finalised and subj to change

3 - Bedroom + Study Type C4-SP

Unit #01-04

152sqm/ 1636sqft



Hundred Trees - Floor Plans

Strictly not for circulation

* Areas are not finalised and subj to change

3 - Bedroom + Study Type C5-S

Unit #02-05 to #11-05

Unit #02-06 to #12-06 (mirror image)

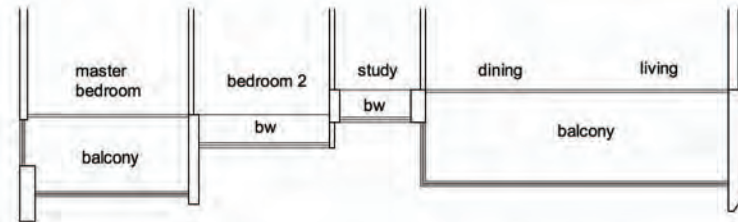
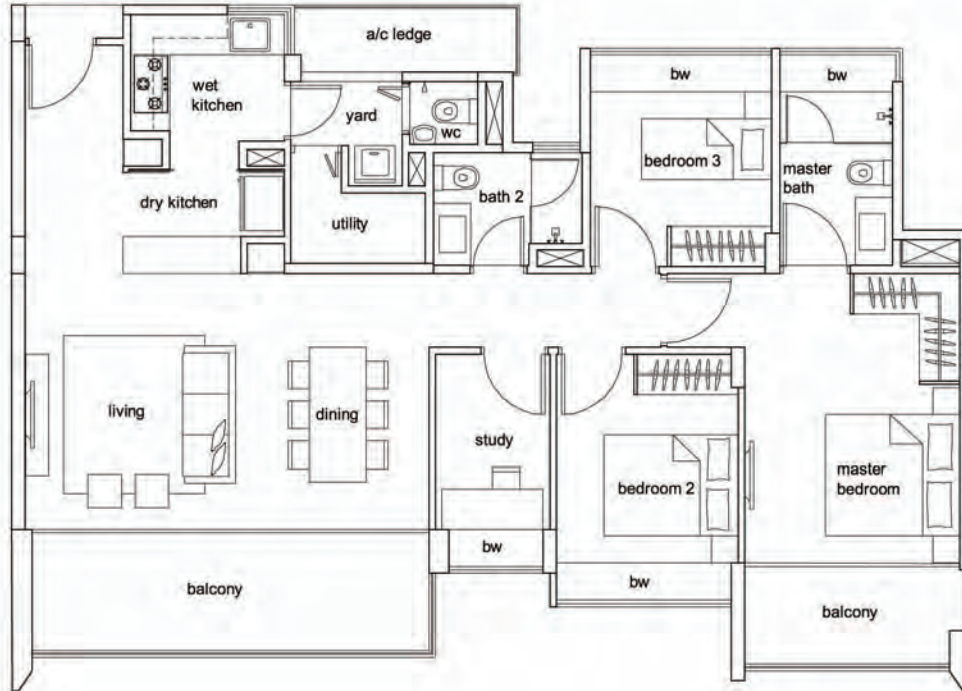
Unit #02-13 to #11-13

Unit #02-14 to #12-14 (mirror image)

Unit #02-21 to #11-21

Unit #02-22 to #12-22 (mirror image)

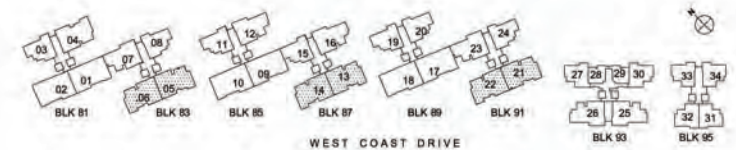
121sqm/ 1302sqft



Unit #02-06 to #12-06 (mirror image)

Unit #02-14 to #12-14 (mirror image)

Unit #02-22 to #12-22 (mirror image)



Hundred Trees - Floor Plans

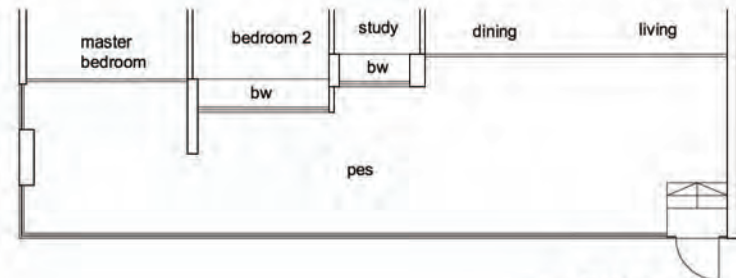
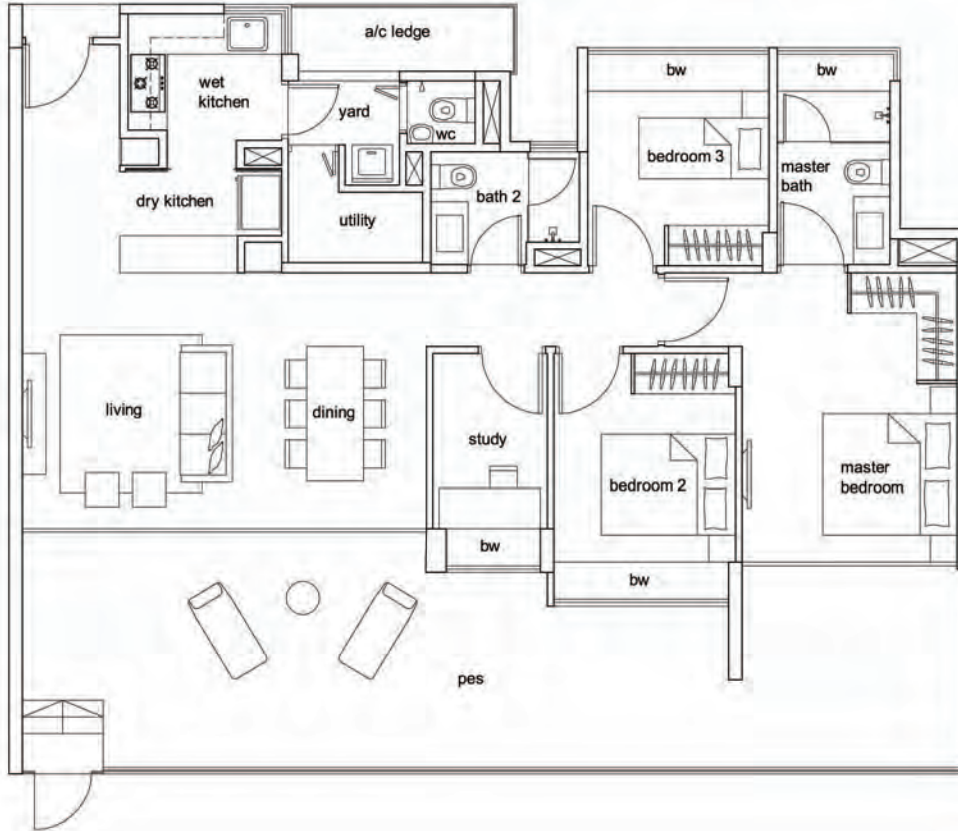
Strictly not for circulation

* Areas are not finalised and subj to change

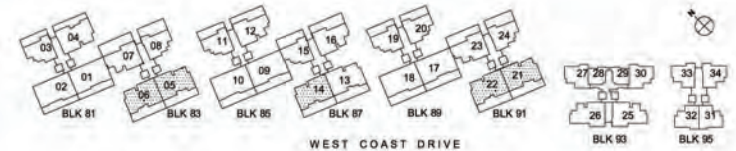
3 - Bedroom + Study Type C5-SP

- Unit #01-05
- Unit #01-06 (mirror image)
- Unit #01-14 (mirror image)
- Unit #01-21
- Unit #01-22 (mirror image)

150sqm/ 1615sqft



- Unit #01-06 (mirror image)
- Unit #01-14 (mirror image)
- Unit #01-22 (mirror image)



Hundred Trees - Floor Plans

Strictly not for circulation

* Areas are not finalised and subj to change

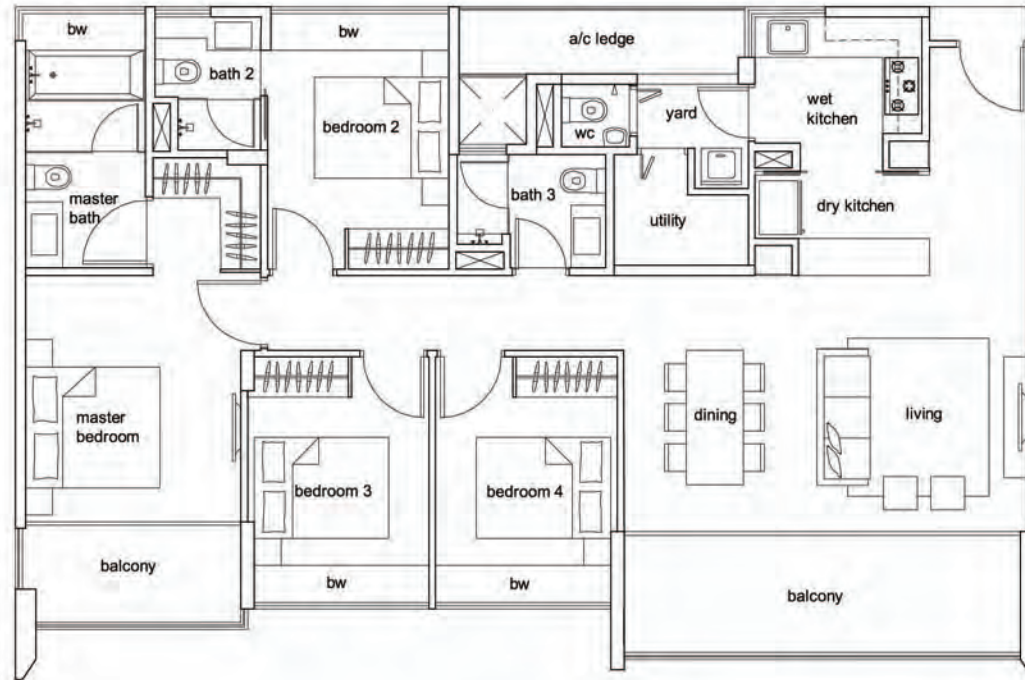
4 - Bedroom Type D1

Unit #02-02 to #11-02

Unit #02-10 to #11-10

Unit #02-18 to #11-18

137sqm/ 1475sqft



Hundred Trees - Floor Plans

Strictly not for circulation

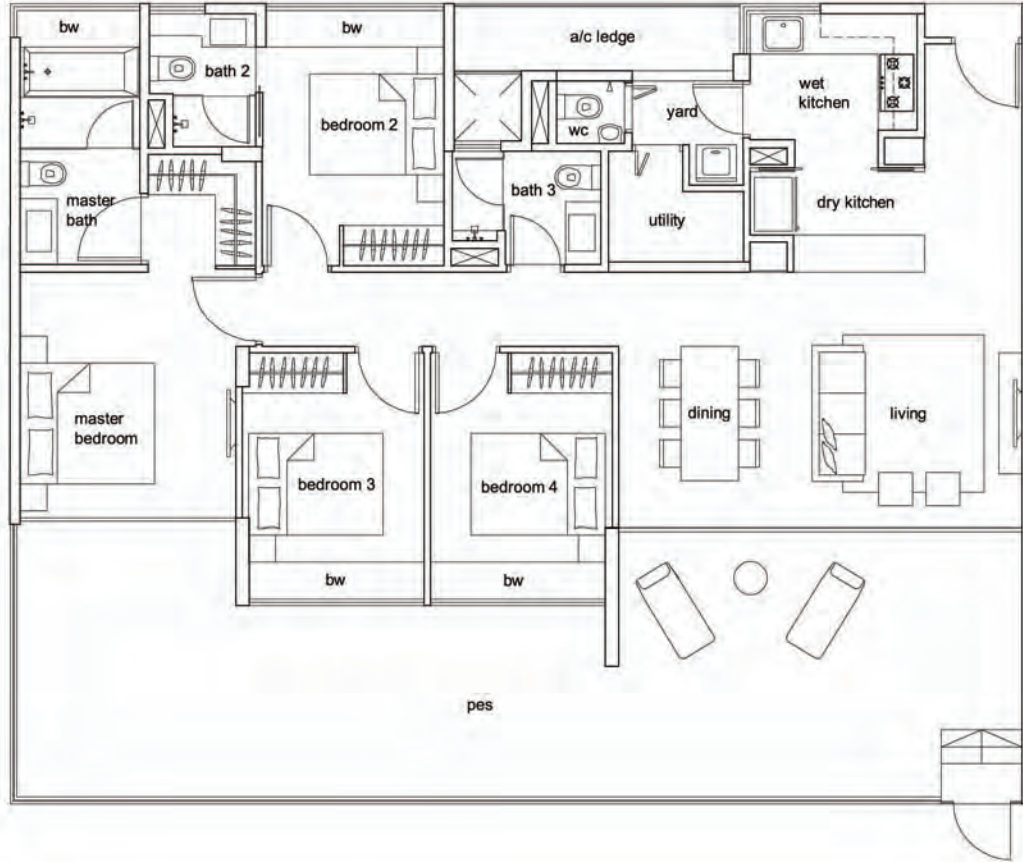
* Areas are not finalised and subj to change

4 - Bedroom Type D1-P

Unit #01-02

Unit #01-10

176sqm/ 1894sqft



Hundred Trees - Floor Plans

Strictly not for circulation

* Areas are not finalised and subj to change

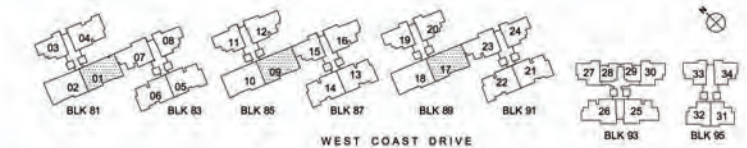
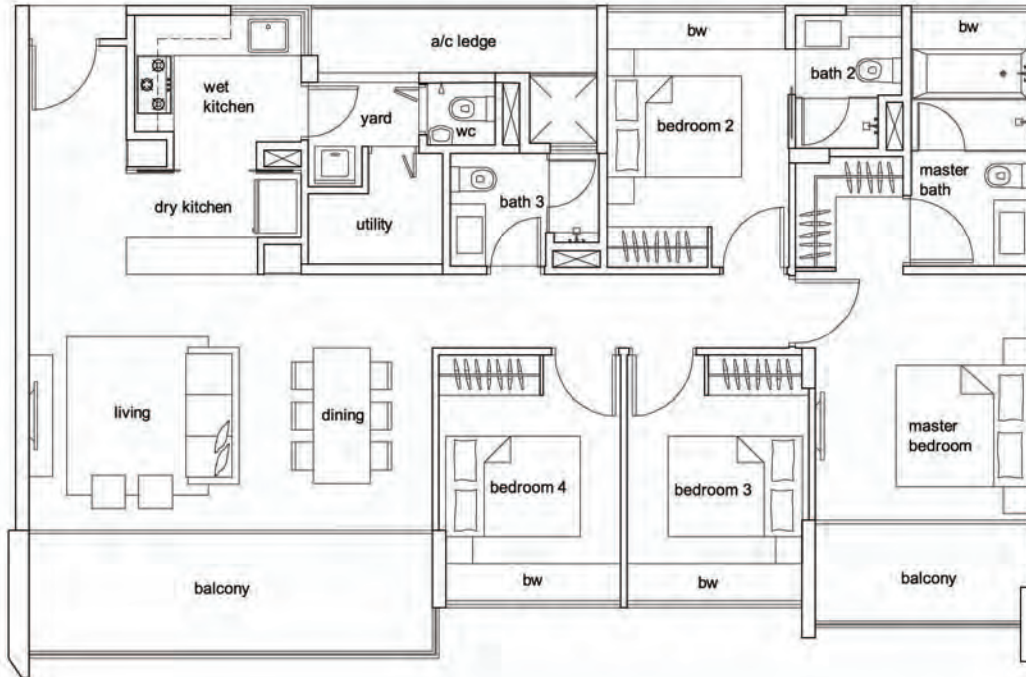
4 - Bedroom Type D2

Unit #02-01 to #12-01

Unit #02-09 to #12-09

Unit #02-17 to #12-17

137sqm/ 1475sqft



Hundred Trees - Floor Plans

Strictly not for circulation

* Areas are not finalised and subj to change

4 - Bedroom

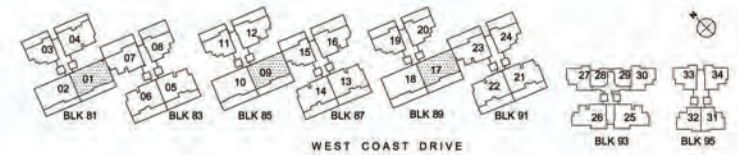
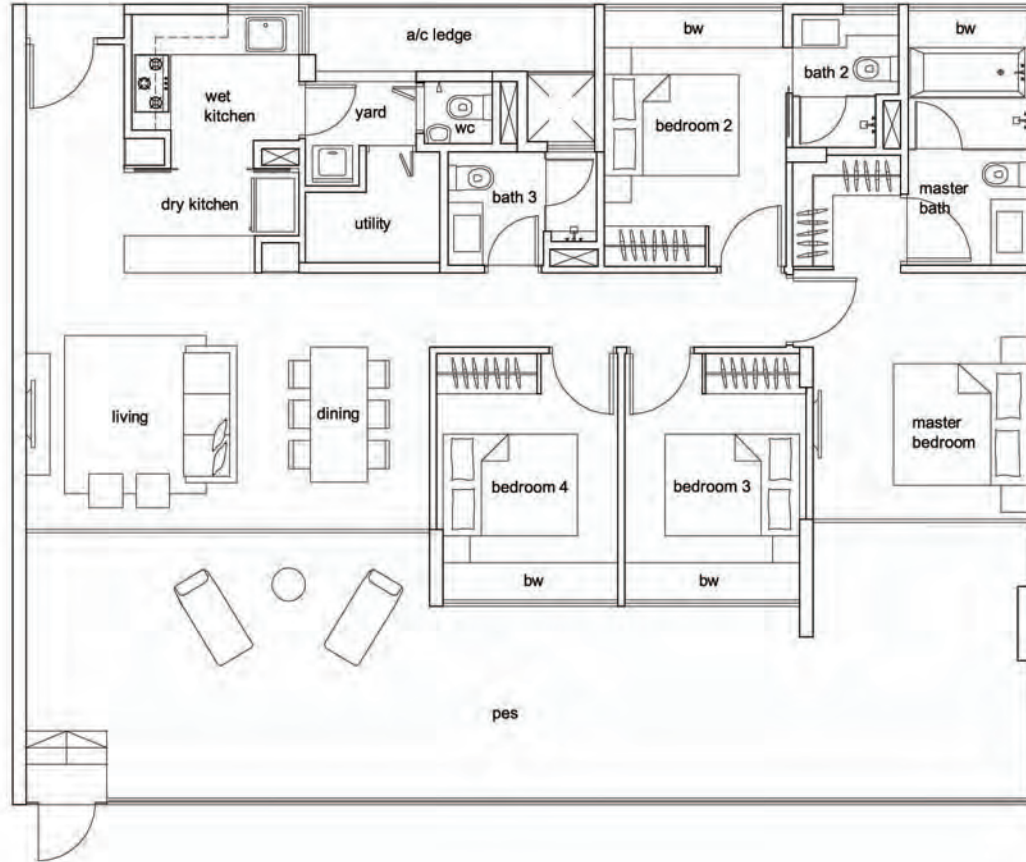
Type D2-P

Unit #01-01

Unit #01-09

Unit #01-17

176sqm/ 1894sqft

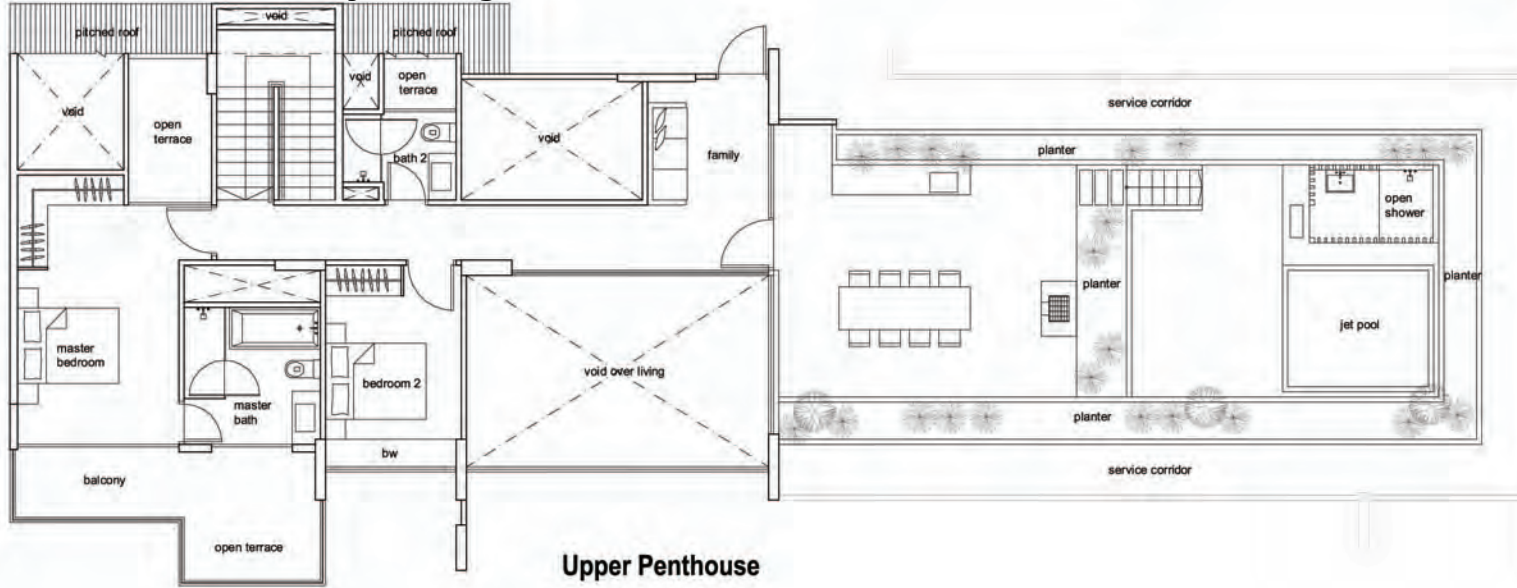


WEST COAST DRIVE

Hundred Trees - Floor Plans

Strictly not for circulation

* Areas are not finalised and subj to change



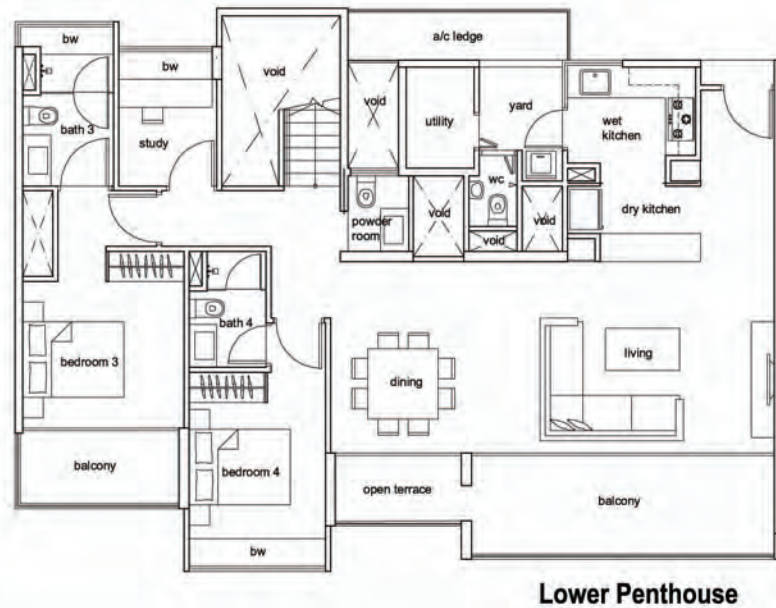
Penthouse Type PH1

Unit #12-02

Unit #12-10

Unit #12-18

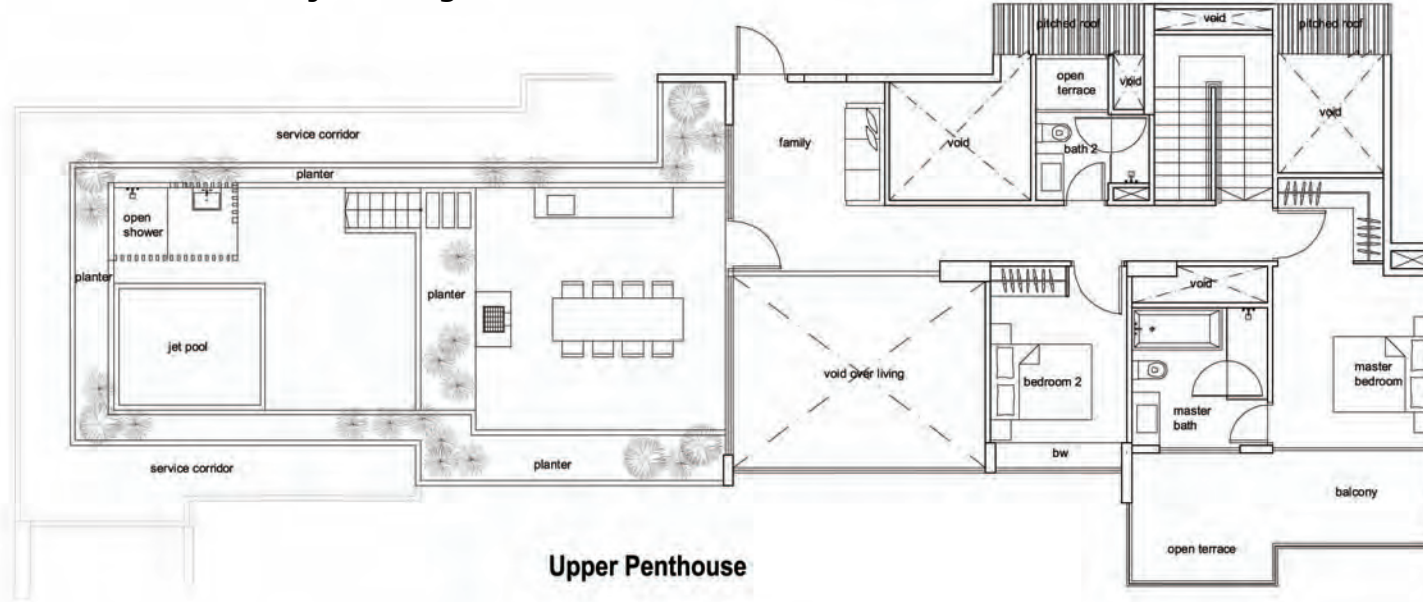
345sqm/ 3714sqft



Hundred Trees - Floor Plans

Strictly not for circulation

* Areas are not finalised and subj to change



Upper Penthouse

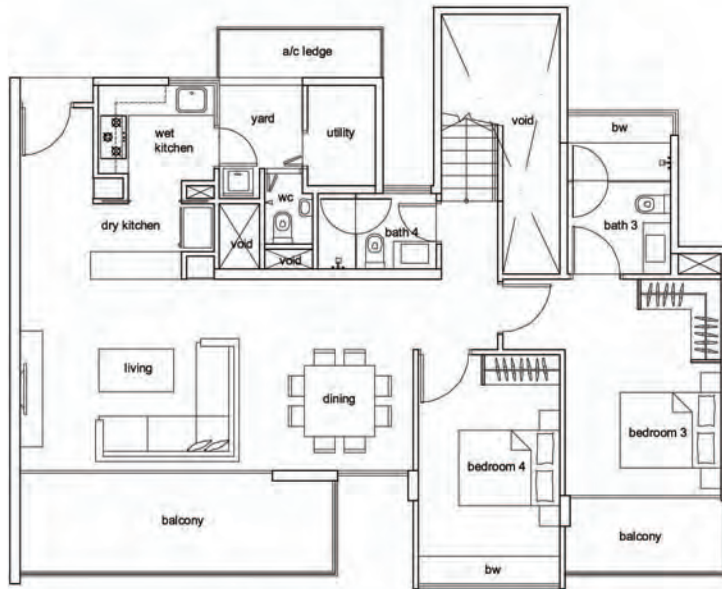
Penthouse Type PH2

Unit #12-05

Unit #12-13

Unit #12-21

316sqm/ 3401sqft



Lower Penthouse



WEST COAST DRIVE